

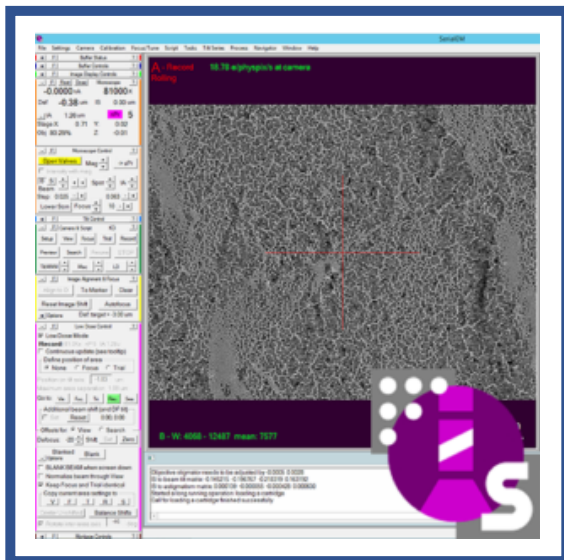
PACIFIC NORTHWEST CRYO-EM CENTER

Mail code CL-P2M
2730 S. Moody Ave.
Portland, OR 97201



Session Start

- Log into Arctica or Glacios via TeamViewer.
 - o SPOC will supply you with Login morning of your screening session
 - o Only K3 PC is required for remote SerialEM screening at PNCC
- SPOC will provide autoloader inventory to you with Grid IDs labeled
 - o Log into Microscope PC to see Autoloader OCX (not required)
- Save data using the "Three Folders Deep" syntax
 - o Z:\pncc-storage\rawdata\pncc\PROPOSAL\SAMPLE\SESSION\
 - PROPOSAL = your project ID (e.g. 50414)
 - SAMPLE = what you're looking at (e.g. ApoFe_Training)
 - SESSION = session type, screening
 - Example = 50414\1022_ApoFe_Training\screening\
 - All folders and data under screening\ will appear in your EMSL account



Shutdown

- Load the cross grating located in slot 1: LoadCartridge 1
- Close all open maps
- Complete Independent Microscope Log for each grid you screened
 - o <https://pncc.labworks.org/access/independent-microscope-log>
- Notify SPOC you are finished
- Log out